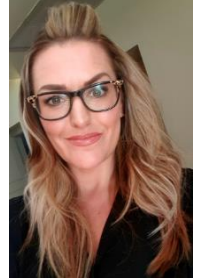


# Early Years Foundation Stage (EYFS) Ouston Primary School

## Meet our EYFS Team

**Miss Lowery** is our EYFS Lead and class teacher for Reception. She oversees areas such as curriculum planning, assessment and staff development across both our Nursery and Reception classes. Miss Lowery will be the joint Key Person, alongside Mrs Downs, for our Reception children in September. Miss Lowery currently works part-time so will be in school Monday-Wednesday.



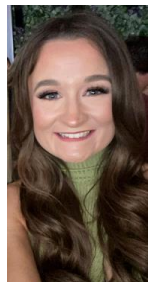
**Mrs Downs** is an experienced teacher who has enjoyed working in Early Years as Reception class teacher for a number of years. She is also Phonics and Music Lead across our school. Mrs Downs will be the joint Key Person, alongside Miss Lowery, for our Reception children in September. Mrs Downs is also part-time and will be in school Wednesday - Friday.

**Mrs Pendleton** has been working in Early Years for a year and is looking forward to continuing this in September. She will be supporting children across EYFS.



**Mrs Spencer** has been working as a teaching assistant in Reception for the last two years, but she is also a qualified teacher. From September, she will be working with our Nursery children in September and will be Key Person for some of them.

**Miss Davis** has lots of experience working in Early Years and will be Key Person for our most of our Nursery children.



**Although all children in the EYFS are given a named Key Person, the ethos of Early Years is very much based around working as a team.**

This means that all staff will interact with your child as much as possible and develop positive relationships with them. This could be through working with them on directed adult-led tasks or through supporting them in their child-led play across the Early Years environment.

## **First Week in September - Reception**

For the first two days at the start of term, new Reception children will do half-days in two groups. This is to enable staff to complete statutory one-to-one baseline assessments and to support your child in settling positively into their new classroom environment. Both of our Reception teachers will be in Reception class for the first few days, to support with carrying out these assessments and to get to know their new class together.

These half days will be:

Thursday 5<sup>th</sup> and Friday 6<sup>th</sup> September.

### **Group 1**

New Reception children *who currently attend our Nursery class*, will attend morning sessions from 9.15am until 11.30am on these days.

### **Group 2**

New Reception children *who did not attend our Nursery*, will attend afternoon sessions from 1.00pm until 3.15pm on these days.

Both groups will enter the school via the separate EYFS entrance at the bottom of the staff car-park. This is also the collection point at the end of the session.

**From Monday 9<sup>th</sup> September all new Reception children will attend together for full days.** Our usual school hours are 8.55am-3.20pm, with the doors opening at 8.45am.

## **September - Nursery**

Please note that Nursery pupils will start their usual days/hours from Thursday 5<sup>th</sup> September.

## **EYFS Organisation**

Reception and Nursery children will be taught in separate classrooms in the mornings.

After a short settling in period, our Nursery children will begin to join Reception in the afternoons (along with Miss Davis) to explore the full Early Years environment, including the larger outdoor area.

This helps our Nursery children to have a seamless transition into Reception, when the time comes, but it also helps our Reception children through giving them confidence as they model expectations.

**We look forward to welcoming you all in September!**