



Mrs L Lavelle - Head Teacher
Mrs J Wise - Deputy Headteacher

Arisaig, Ouston, Chester-le-Street, Co Durham, DH2 1RQ
Telephone/Fax: 0191 410 2599 Email: info@oustonprimary.org.uk
Web Site: www.oustonprimary.durham.sch.uk



NEWSLETTER FOR PARENTS & CARERS FEBRUARY 2021

Dear Parents/Carers,

Well, I think we can safely say that we have never had a January/February half term like this one! As we approach the half term break (that we are all very much ready for!) I would like to say thank you and a big well done to:

Our children who have dealt with change really well, shown great resilience and have worked hard on school tasks whether at home and in school. You have also remembered to have fun and be creative which has been lovely to see. You have done everything from snow-men making to creating your own news broadcasts!

Parents/carers who have risen to the challenge of supporting your children with home learning so well whilst juggling your work and home commitments.

Parents/carers who are key workers and have entrusted us with your children at school while you carry out critical and often very challenging roles.

Please see attached a Star Award certificate for all parents/carers. Print it off and pop it on your fridge or in a frame - you have earned it!

Our staff who have worked tirelessly to produce high quality lessons for children at home and in school, to ensure regular communication and engagement with pupils and their parents/carers and to nurture and care for the children who are in school. We have also



The contents of this letter are confidential and are intended solely for the addressee.

Ouston Primary School is part of Jigsaw Learning



Jigsaw
Learning
Trust

gained a multitude of new technical skills, including being able to use OBS studio to record lessons, compress videos, create our own YouTube channels and create links to unlisted videos!

Our kitchen staff for continuing to provide hot meals every day for children in school and adjusting to new organisation and routines. Also to our Lunch Time Supervisors for ensuring that children have happy and sociable break-times and for braving the winter weather conditions!

Our School Office staff for managing all the usual admin tasks so well whilst dealing with the additional demands created by the current situation, including a huge increase in post as we send out lovely things to our children working at home!

And final, thank you to our cleaning staff for their fantastic work as always and to our caretaker Mrs Patton who has done such a brilliant job of clearing snow and ice it seems just about every week this half term!

Staying Connected

A big focus for us this half term has been to connect our children working at home with those in school, aiming to ensure that they still very much feel like a class as usual within our school community. We hope that the Zoom meetings, Golden Assemblies, Class videos and sending surprises out in the post has helped all children with this, whether at home or in school.

Further below you will find photos from each year group, showing some of the fantastic work, creative tasks and fun activities that children both at home and at school have been doing this half term. You have been brilliant and we are very proud of you all.

Contact During Half Term

The School Office will be open on the Monday and Tuesday of half term if you need to contact us by telephone or collect anything, including a skipping rope if your child doesn't have theirs yet.

As during the first few days of the Christmas holidays please contact us via email info@oustonprimary.org.uk if you need to inform us of a child's positive Covid case as a result of symptoms that start up to Sunday the 14th February. I will check emails at 10am.



The contents of this letter are confidential and are intended solely for the addressee.

Ouston Primary School is part of Jigsaw Learning



Much as though they love hearing from you, Class Teachers will turn off their Class Dojo notifications during half term and you will not be able to contact them using Dojo during the holidays. Any messages or uploaded work will be picked up after the break.

Parent/Carer Views

Please see attached a short survey which asks for your views about Remote Learning so far and how your child has managed this half term whether at home or in school. It also asks if there are any areas you feel we need to support your child with particularly once schools fully re-open. This could be an academic need but also emotionally or socially. You can either print this survey off and send back with your child if they are in school or fill in electronically and email it back to info@oustonprimary.org.uk. Don't worry if you haven't got time to fill this in either, we don't want to give anyone an additional task when you are all so busy. However, any returns we do get will help us to plan for the remaining weeks of the Spring Term.

As you may be aware, we are hoping to receive more information about when schools might fully re-open in a government briefing on the 22nd February. We will then be in touch with our plans for the rest of the Spring Term.

In the meantime, I would like to wish you all a safe and happy half term week.

Mrs Lavelle

SPRING ART WORK



Nursery - Jemima



Year 3 - Callum



The contents of this letter are confidential and are intended solely for the addressee.

Ouston Primary School is part of Jigsaw Learning





Year 4 - Alfie



Year 5 - John



Year 5 - Abby



Year 1 - Imogen

The photos on the next few pages below give a taste of what our children have been doing at home and in school this half term from Nursery to Year 6.



The contents of this letter are confidential and are intended solely for the addressee.
Ouston Primary School is part of Jigsaw Learning



Jigsaw Learning Trust is an exempt charity. It is a company limited by guarantee registered in England and Wales (Registered no: 8277622) whose registered office is Fulwell Infant School Academy, Ebdon Lane, Fulwell, Sunderland, SR6 8ED

NURSERY (and one or two siblings!)



RECEPTION



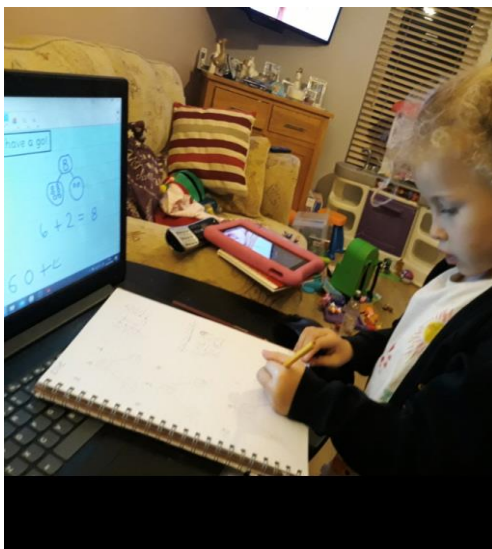
The contents of this letter are confidential and are intended solely for the addressee.
Ouston Primary School is part of Jigsaw Learning



Jigsaw Learning Trust is an exempt charity. It is a company limited by guarantee registered in England and Wales (Registered no: 8277622) whose registered office is Fulwell Infant School Academy, Ebdon Lane, Fulwell, Sunderland, SR6 8ED



YEAR 1



The contents of this letter are confidential and are intended solely for the addressee.
Ouston Primary School is part of Jigsaw Learning



Jigsaw Learning Trust is an exempt charity. It is a company limited by guarantee registered in England and Wales (Registered no: 8277622) whose registered office is Fulwell Infant School Academy, Ebdon Lane, Fulwell, Sunderland, SR6 8ED

YEAR 2



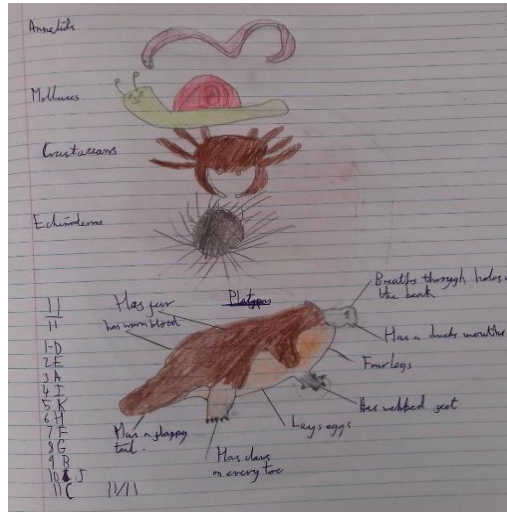
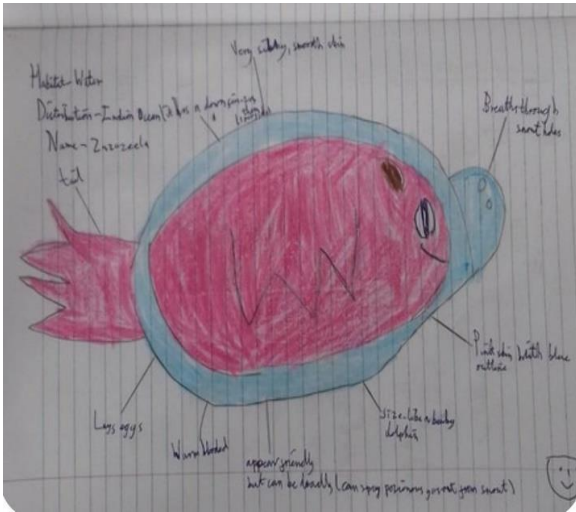
YEAR 3



The contents of this letter are confidential and are intended solely for the addressee.
Ouston Primary School is part of Jigsaw Learning

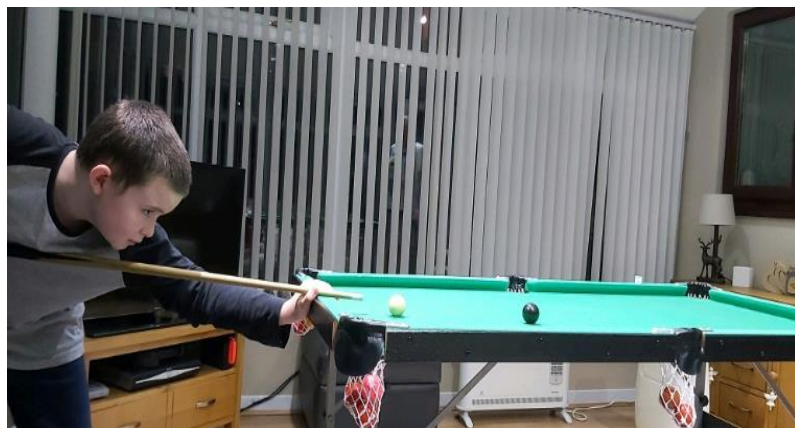
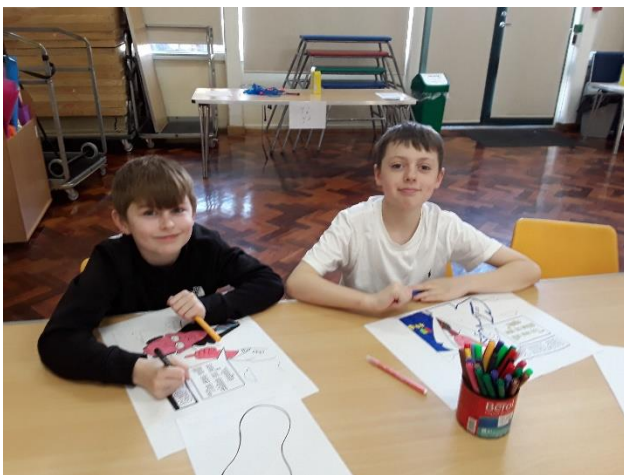


Jigsaw Learning Trust is an exempt charity. It is a company limited by guarantee registered in England and Wales (Registered no: 8277622) whose registered office is Fulwell Infant School Academy, Ebdon Lane, Fulwell, Sunderland, SR6 8ED



Science - Leia and Ellie

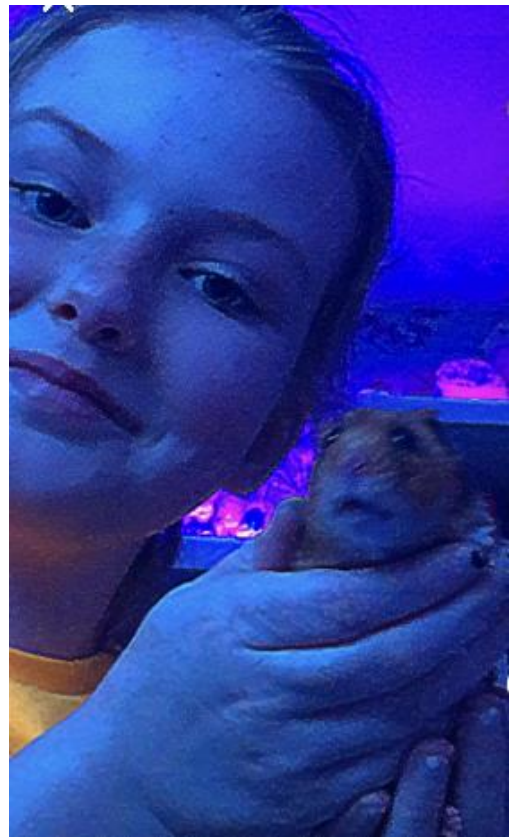
YEAR 6



The contents of this letter are confidential and are intended solely for the addressee.
Ouston Primary School is part of Jigsaw Learning



Jigsaw Learning Trust is an exempt charity. It is a company limited by guarantee registered in England and Wales (Registered no: 8277622) whose registered office is Fulwell Infant School Academy, Ebdon Lane, Fulwell, Sunderland, SR6 8ED



Art Work - Violet



The contents of this letter are confidential and are intended solely for the addressee.

Ouston Primary School is part of Jigsaw Learning



Jigsaw Learning Trust is an exempt charity. It is a company limited by guarantee registered in England and Wales (Registered no: 8277622) whose registered office is Fulwell Infant School Academy, Ebdon Lane, Fulwell, Sunderland, SR6 8ED



The contents of this letter are confidential and are intended solely for the addressee.

Ouston Primary School is part of Jigsaw Learning



Jigsaw Learning Trust is an exempt charity. It is a company limited by guarantee registered in England and Wales (Registered no: 8277622) whose registered office is Fulwell Infant School Academy, Ebdon Lane, Fulwell, Sunderland, SR6 8ED